

DELTA MOLD INDUSTRIAL LIMITED

best solution for mold

Model number: \_\_\_\_\_

Part name: \_\_\_\_\_

Part number: \_\_\_\_\_

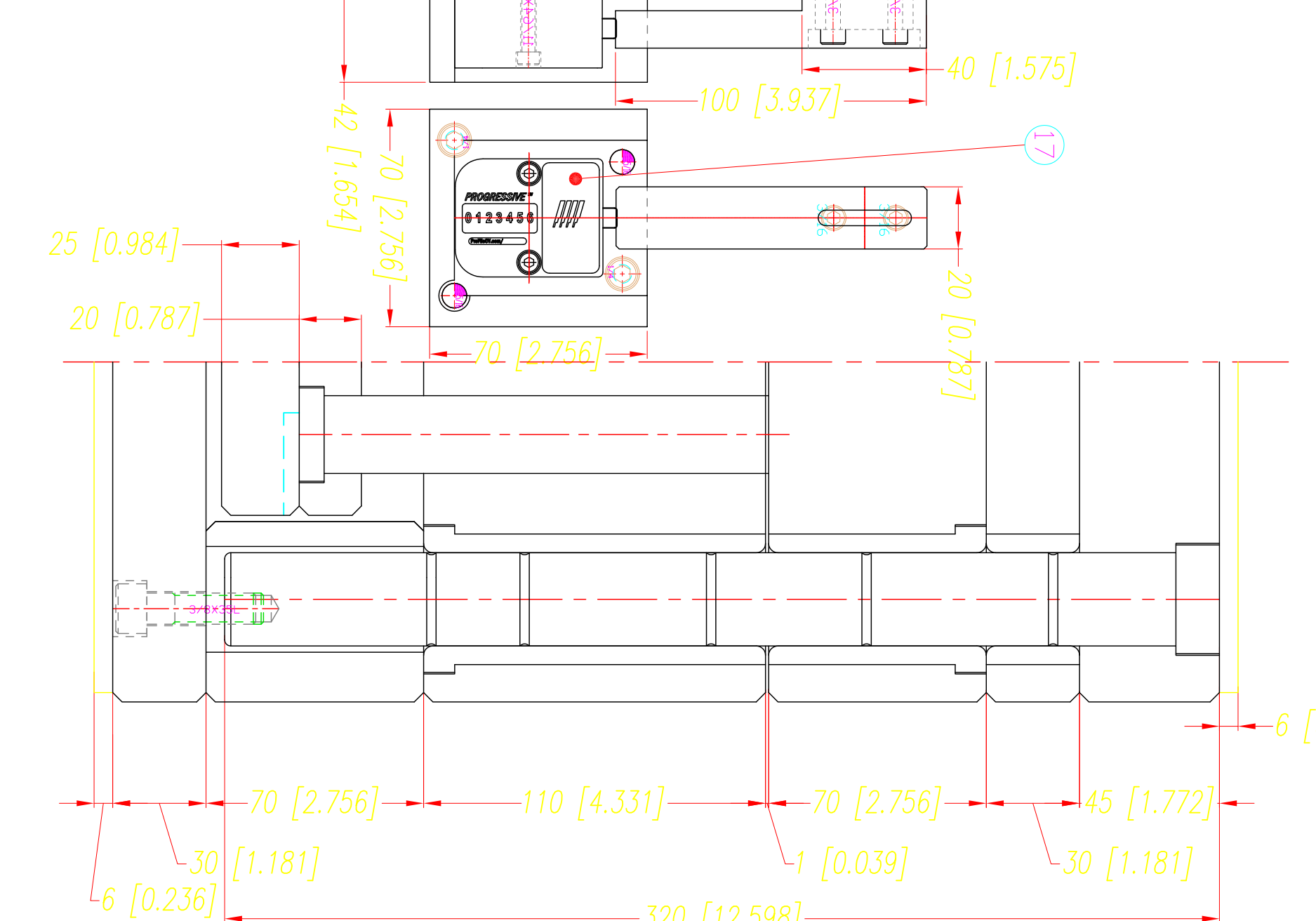
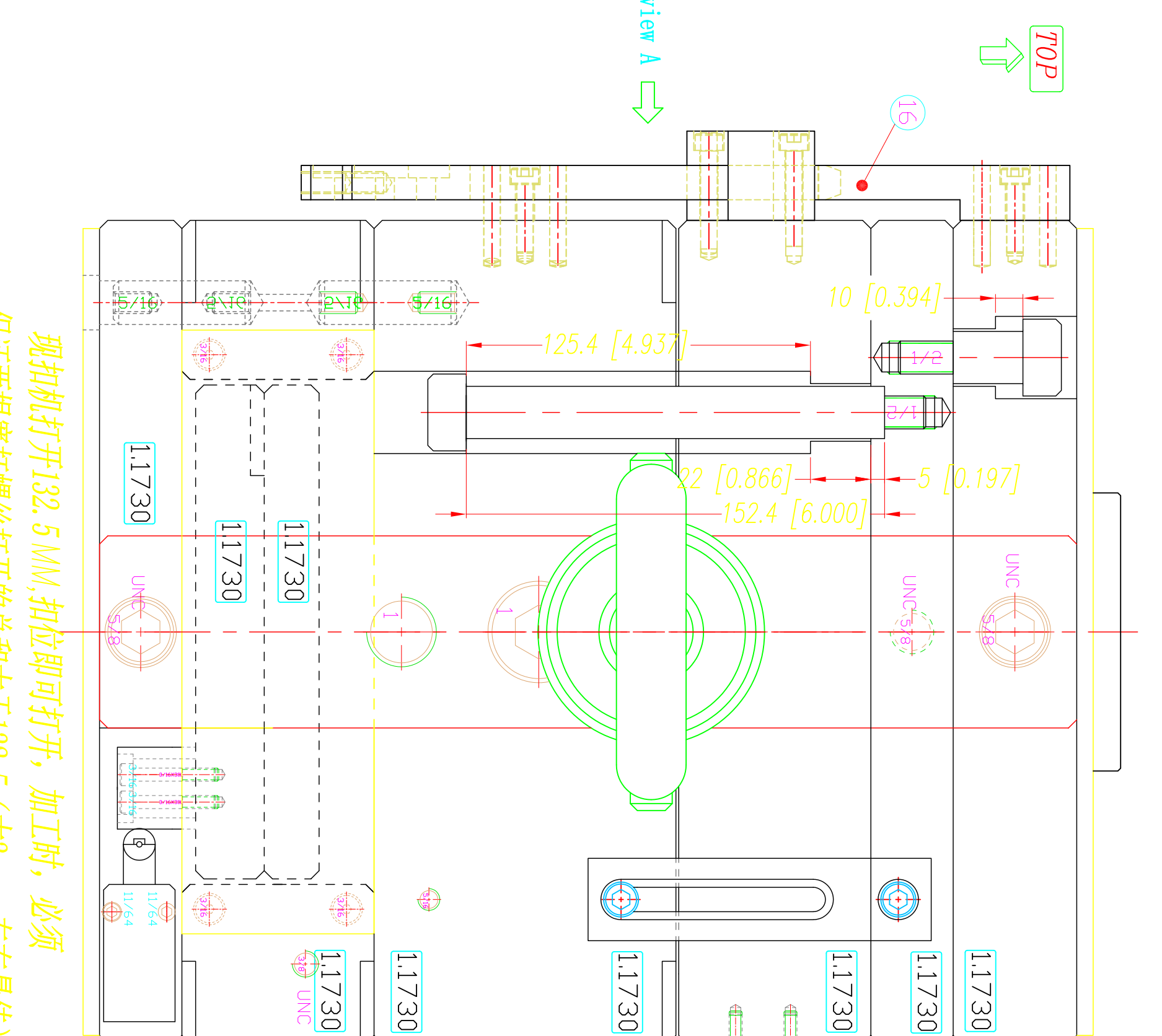
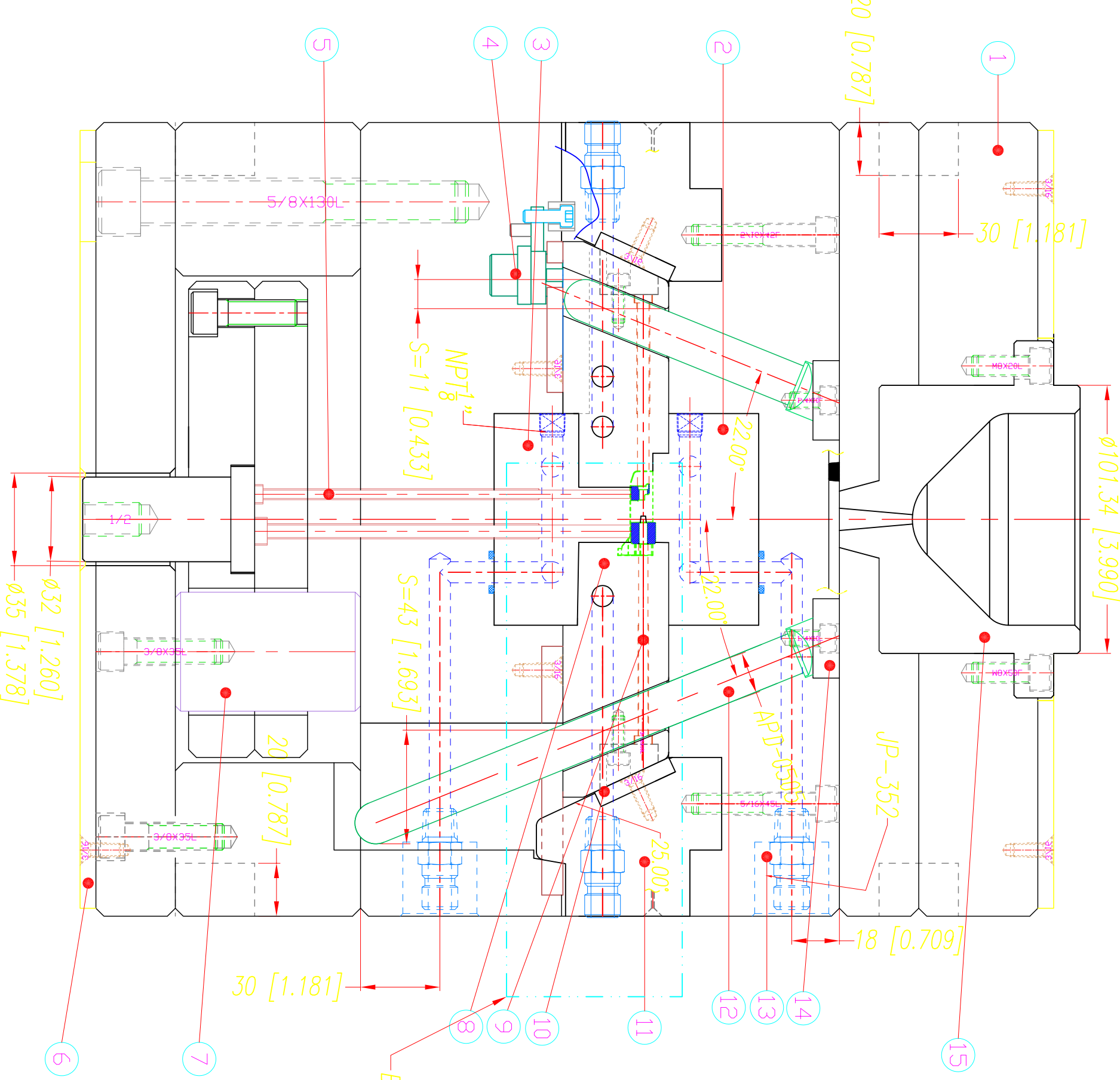
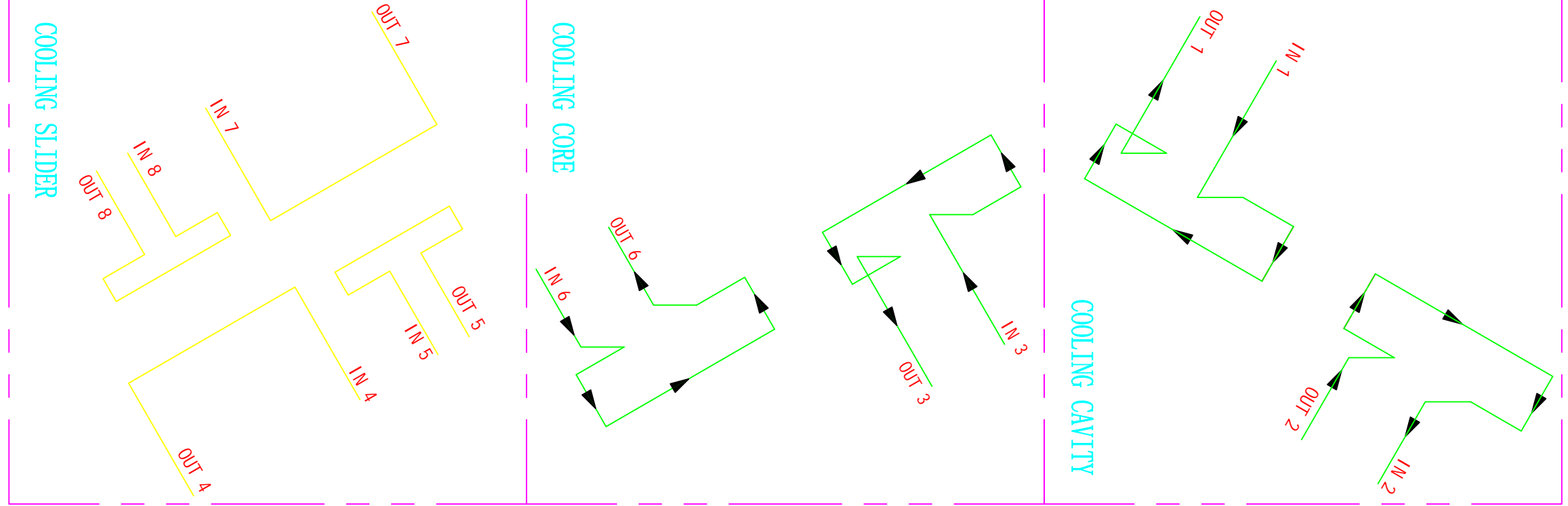
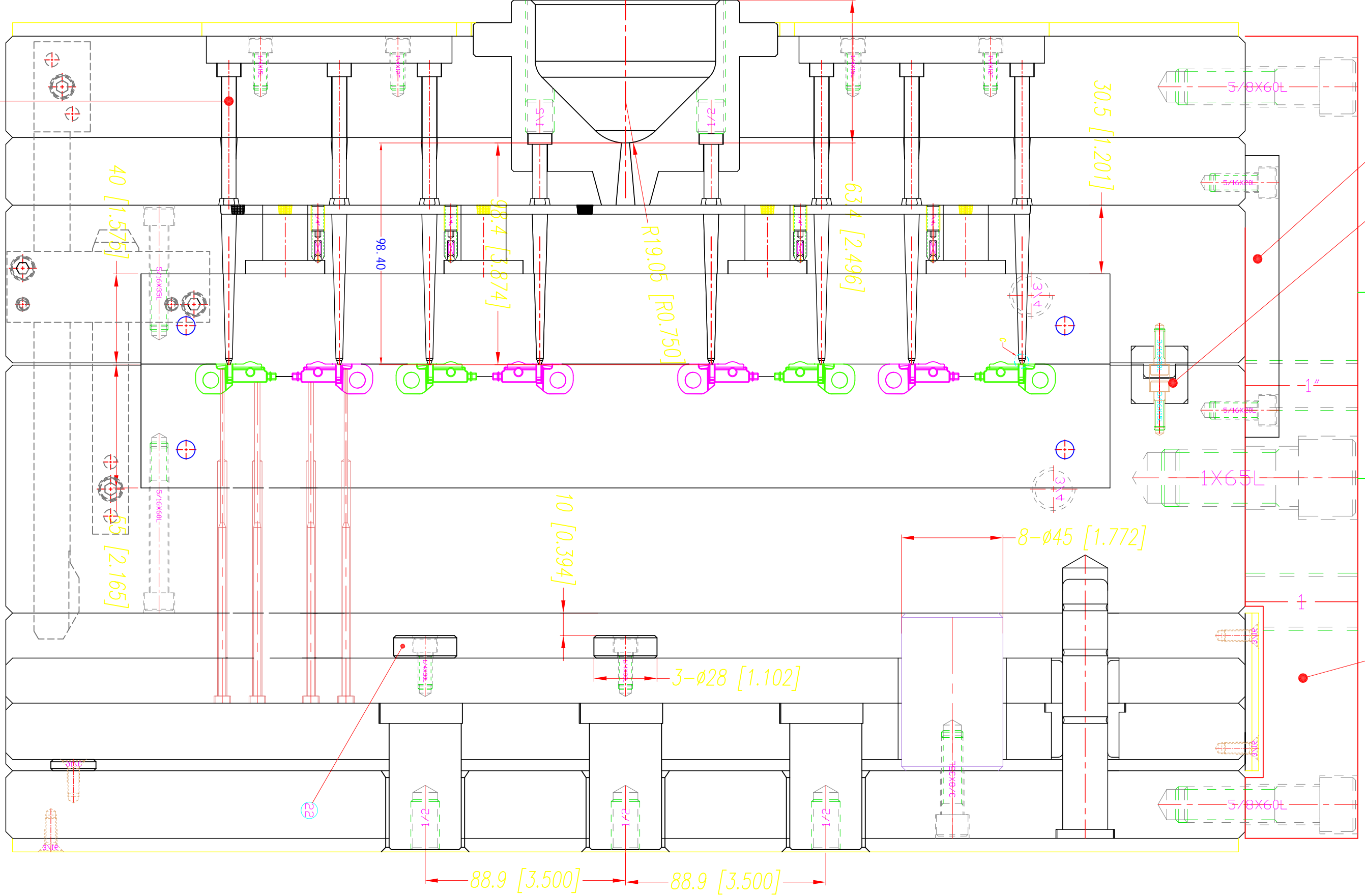
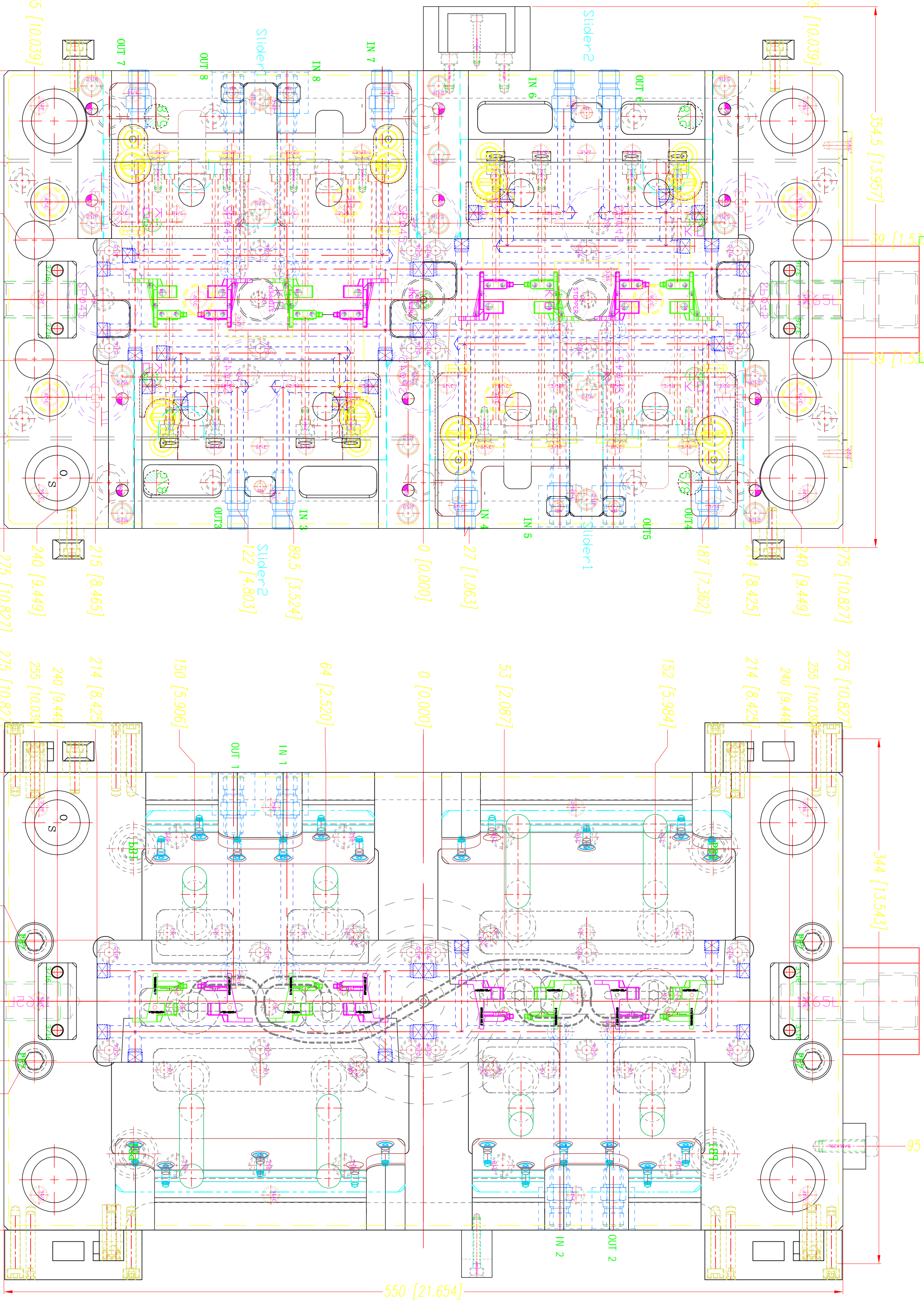
Cavities number: \_\_\_\_\_

Material: \_\_\_\_\_

Max. ejection: \_\_\_\_\_

Model size: \_\_\_\_\_

www.delta-mold.com



23	Guide rail	1.2510	4	29X22X110	HRC 48~50
22	Ejector stopper	1.1730	5	Ø28X15	
21	Lifter bridge	1.1730	1	356X70X50	
20	Taper locating block set	STD	2	MTR-8-2 FTR-8-2	DME
19	mold lock	STD	1	115X15X30	
18	Runner lock pin	STD	8	EX17M6	DME
17	Shot counter	STD	1	38X25.4X47.5	DME
16	Parting lock set	STD	4	Z170	HASCO
15	Sprue bushing	1.2510	2	Ø101.3X120	
14	Attach block	1.1730	4	10X30X45	DME
13	Cooling coupler	STD	16	JP-352	DME
12	Angular pin	STD	4	APD-0505	HRC 48~50
11	Wedge block	1.2510	4	60X60X190	HRC 48~50
10	Wedge wear plate	1.2510	4	190X31X6	DME
09	Slide insert pin	STD	4	EX10M6	HRC 48~50
08	Slide body	1.2344	2	205X93X35	HRC 48~50
07	Support pillar	1.1730	10	Ø45X901	
06	Temp insulator plate	STD	2	594X344X6	DME
05	Ejector Pin	STD	8	EX14M6	DME
04	SLIDE RETAINER	STD	10	PRS1000	DME
03	Core Sub Insert	1.2344	1	230X80X45	HRC 48~50
02	Cavity Main Insert	1.2344	1	230X80X38	HRC 50~52
01	Mold Base	1.1730	1	FC13060A60B100C90-L320	LKM

Customer: ---

Pro. Mat'l: PA66+30%GF

Proj. Name: ---

Shrinkage: 4/1000

Drw. Name: ---

Cav. Qua.: 4+4

Customer No.: ---

Factory No.: DMI---

Designed: DKH.D.S

Checked: DKH.D.S

Approved: ---

Unit: MM

Size: A1

Rev. A

Sheet 1 of 1